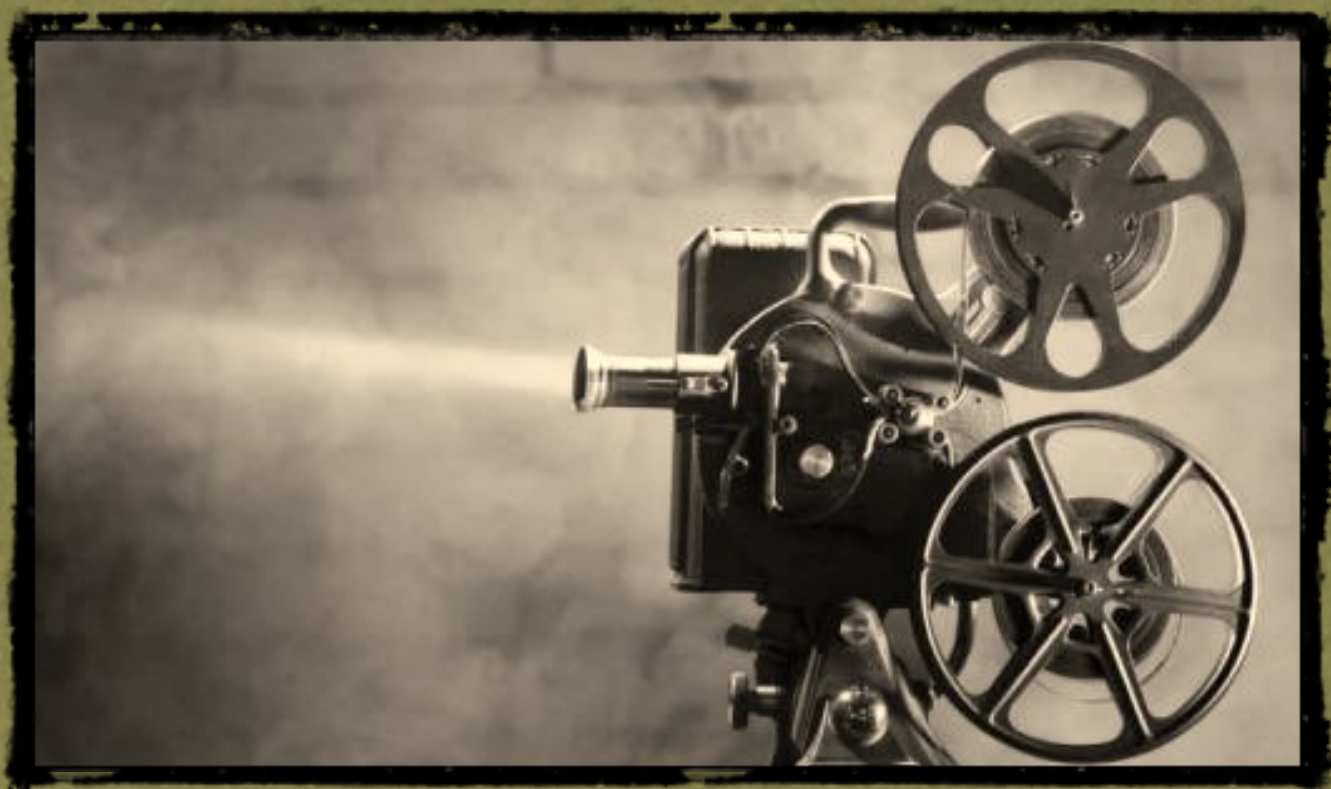


ENNIO MORRICONE

*Nuovo Cinema
Paradiso*



PER QUARTETTO D'ARCHI E CLARINETTO
ELABORAZIONE E STRUMENTAZIONE DI
MAURIZIO MANAGÒ

Nuovo Cinema Paradiso

di E. Morricone

*Elaborazione e strumentazione
di Maurizio Managò*

Musica di Ennio Morricone
Copyright © 1988 by EMI General Music Publishing Srl
Tutti i diritti riservati per tutti i Paesi
Questo arrangiamento © 2020 by EMI General Music Publishing Srl
Riprodotta per gentile concessione di Hal Leonard Europe Srl per conto di EMI General Music
Publishing Srl

*"A Lillo Palermo con stima e gratitudine.
Straordinario interprete,
capace di far risplendere la nobile arte
dei Padri della Musica"*

Maurizio Managò

Nuovo Cinema Paradiso

Ennio Morricone
arr. Maurizio Managò

Nuovo Cinema Paradiso (♩ = c. 104)

Clarinetto in Sib

Violino I

Violino II

Viola

Violoncello

mf

p

mf

p

Cl.Bs

Vno I

Vno II

Vla

Vc.

mf

p

p

p

Cl.Bs

Vno I

Vno II

Vla

Vc.

mf

mf

p

p

p

124

Cl.B♭

Vno I

Vno II

Vla

Vc.

mf

This system contains measures 124 through 128. The music is in 4/4 time and B-flat major. The Clarinet in B-flat (Cl.B♭) plays a complex, rhythmic melody with many sixteenth and thirty-second notes. The Violin I (Vno I) and Violin II (Vno II) parts are more melodic, with the Vno I playing a line that often mirrors the Cl.B♭. The Viola (Vla) and Violoncello (Vc.) provide a harmonic foundation with sustained notes and some rhythmic accompaniment. A dynamic marking of *mf* (mezzo-forte) is present in the Viola part.

129

Cl.B♭

Vno I

Vno II

Vla

Vc.

ff

f

f

f

This system contains measures 129 through 134. The music continues in 4/4 time. The Cl.B♭ part becomes more intense, featuring a *ff* (fortissimo) dynamic marking. The Vno I and Vno II parts also show increased intensity, with *f* (forte) markings. The Viola and Vc. parts also feature *f* markings. The tempo remains steady, but the overall texture becomes denser and more powerful.

135

Cl.B♭

Vno I

Vno II

Vla

Vc.

rit.

mf

p

p

p

p

This system contains measures 135 through 140. The music begins with a *rit.* (ritardando) marking, indicating a gradual slowing down. The Cl.B♭ part starts with a *mf* (mezzo-forte) dynamic. The other instruments (Vno I, Vno II, Vla, Vc.) play more sustained, harmonic notes, with a dynamic marking of *p* (piano) for each. The overall mood is more reflective and tender.

ISBN : 979 12 59 830 83 8

