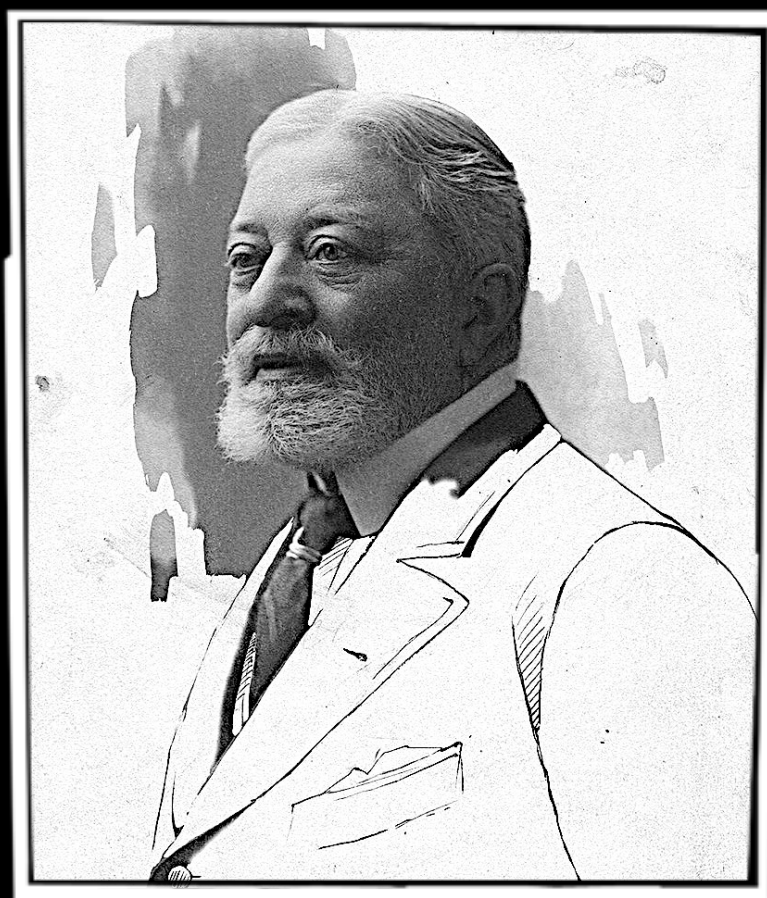


FRANCESCO PAOLO TOSTI

IL PESCATORE CANTA!



Per Orchestra di Fiati e Tenore
di Alessandro Celardi

Il pescatore canta!

vecchia canzone di strada
for tenore solo and wind band

Full Score

FRANCESCO PAOLO TOSTI
parole di R. Mazzola
arr. Alessandro Celardi

Allegretto (quasi un tempo) 5

Tenore Solo

C Piccolo

C Flute 1

C Flute 2

Oboe

Bassoon

Bb Clarinet 1

Bb Clarinet 2

Bb Clarinet 3

Bb Bass Clarinet

Eb Alto Saxophone 1

Eb Alto Saxophone 2

Bb Tenor Saxophone

Eb Baritone Saxophone

Bb Trumpet 1

Bb Trumpet 2

F Horn 1

F Horn 2

C Trombone 1

C Trombone 2

C Euphonium

C Basses

Contrabbasso

Timpani

Percussion (Susp. Cymb, Snare Drum)

Glockenspiel

a tempo

65

The musical score for page 65 includes the following parts and markings:

- Sop. Solo:** Vocal line with lyrics: "can ta c se ne mmo re".
- Ottv.:** Oboe part, marked *f*.
- Fl. 1 & 2:** Flute parts, marked *f*.
- Ob.:** Oboe part, marked *f*.
- Bsn.:** Bassoon part, marked *f* and *simile*.
- Cl. 1, 2, 3:** Clarinet parts, marked *f*.
- B. Cl.:** Bass Clarinet part, marked *f*.
- Alto Sax. 1 & 2:** Alto Saxophone parts, marked *f* and *simile*.
- Ten. Sax.:** Tenor Saxophone part, marked *f* and *simile*.
- Bari. Sax.:** Baritone Saxophone part, marked *f* and *simile*.
- Tpt. 1 & 2:** Trumpet parts, marked *f*.
- Hrn. 1 & 2:** Horn parts, marked *f* and *simile*.
- Tbn. 1 & 2:** Trombone parts, marked *f*.
- Euph.:** Euphonium part, marked *f* and *simile*.
- Bass.:** Bass part, marked *f*.
- Cb.:** Cello part, marked *f* and *pizz.*
- Timp.:** Timpani part.
- Perc.:** Percussion part, marked *f*.
- Glock.:** Glockenspiel part.

120

mf

Sop. Solo
bel la, il cuo re mi o tut to/c ra d'o ro

Ottv.

Fl. 1

Fl. 2

Ob.

Bsn.

Cl. 1
p

Cl. 2
p

Cl. 3
f

B. Cl.
p

Alto Sax. 1

Alto Sax. 2

Ten. Sax.

Bari. Sax.

Tpt. 1

Tpt. 2

Hrn. 1

Hrn. 2

Tbn. 1

Tbn. 2

Euph.

Bass.

Cb.
pizz.
p simile

Timp.

Perc.

Glock.

This page of a musical score, labeled 'Full Score' at the top, contains measures 215 through 215. The score is arranged in a standard orchestral format with 23 staves. The instruments listed on the left are: Sop. Solo, Ottv., Fl. 1, Fl. 2, Ob., Bsn., Cl. 1, Cl. 2, Cl. 3, B. Cl., Alto Sax. 1, Alto Sax. 2, Ten. Sax., Bari. Sax., Tpt. 1, Tpt. 2, Hrn. 1, Hrn. 2, Tbn. 1, Tbn. 2, Euph., Bass., Cb., Timp., Perc., and Glock. The music is written in a key signature of one sharp (F#) and a common time signature (C). The dynamic marking *mp* (mezzo-piano) is used throughout. The score features a variety of note values, including quarter, eighth, and sixteenth notes, as well as rests. Many notes are beamed together and have long horizontal lines above them, indicating sustained sounds or glissandi. The Soprano Solo part begins with a long note that spans across the first two measures. The woodwind and brass sections have similar patterns of sustained notes. The percussion parts, including timpani and glockenspiel, play rhythmic patterns. The overall texture is dense and melodic.

ISBN : 979 12 59 830 70 8

