



Giovanni Soricone

**METODO
PER
TUBA**



Via Arno, 16 Pescina (AQ) 67057 - Tel. 328 4854736 - www.accademia2008.it - info@accademia2008.it

Giovanni Soricone

*METODO
PER
TUBA*



Via Arno, 16 Pescina (AQ) 67057 - Tel. 328 4854736 - www.accademia2008.it - info@accademia2008.it

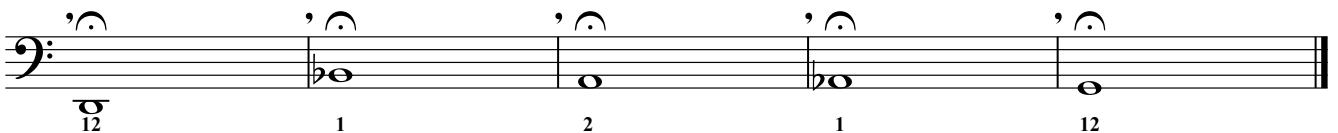
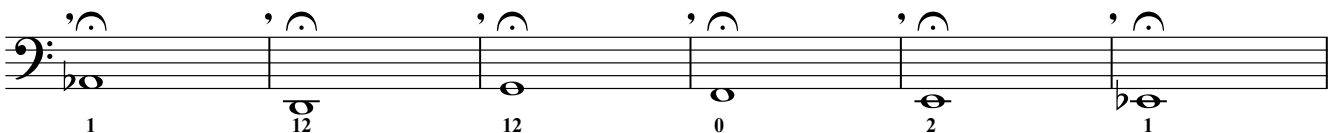
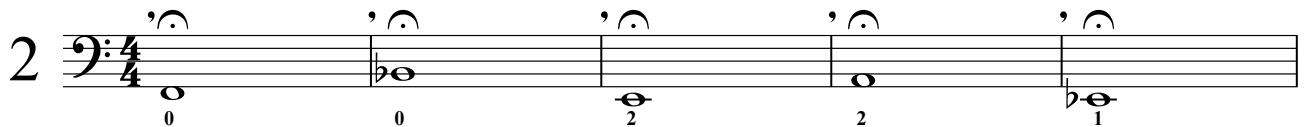
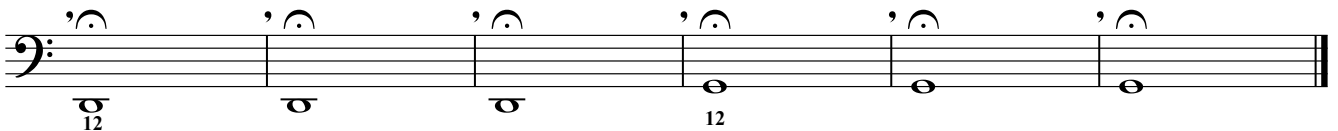
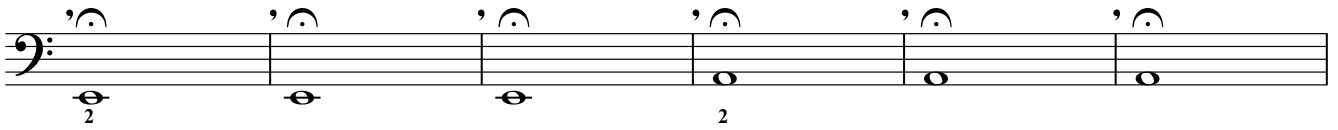
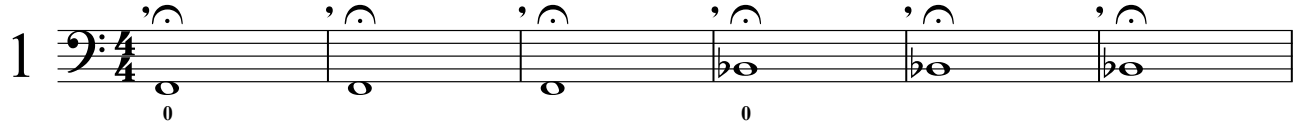
PREFAZIONE

Questo libro è stato scritto per tutti coloro che vogliono imparare a suonare la tuba contrabbassa in sib, toccando in generale i punti essenziali della tecnica di base dello strumento.

L'allievo dovrà fare attenzione ad eseguire ogni capitolo in modo corretto, affinché possa acquisire una buona e giusta preparazione per proseguire gli studi.

Note lunghe

Eeguire in maniera lenta e rilassata,dapprima con l'uso del bocchino poi dello strumento;i respiri, con la bocca pensando alla vocale "O" tra una nota e l'altra devono essere profondi e giusti,senza tempo,cercando di sostenere aria e vibrazione fino in fondo;attacchi senza lingua con dinamica mezzo forte.



9 *simile*

to to

10 *simile*

to to to to

11 *simile*

to to to to to to

4 *simile* 13

to - o to - o

5 *simile*

to - o to - o

6 *simile*

to - o to - o to - o - o

7 *simile*

to - o to - o

MM ♩=72-88

5 *, simile*

to to to to to to to to to to to to

6 *, simile*

to to to to to to to to to to to to

24 DO maggiore

Musical notation for DO maggiore in bass clef. The key signature is C major. The melody consists of a sequence of eighth notes: C2, D2, E2, F2, G2, A2, B2, C3, D3, E3, F3, G3, A3, B3, C4, followed by a whole rest, and then D4, E4, F4, G4, A4, B4, C5.

SOL maggiore

Musical notation for SOL maggiore in bass clef. The key signature is G major (one sharp). The melody consists of a sequence of eighth notes: G2, A2, B2, C3, D3, E3, F#3, G3, A3, B3, C4, D4, E4, F#4, G4, followed by a whole rest, and then A4, B4, C5, D5, E5, F#5, G5.

RE maggiore

Musical notation for RE maggiore in bass clef. The key signature is D major (two sharps). The melody consists of a sequence of eighth notes: D2, E2, F#2, G#2, A2, B2, C3, D3, E3, F#3, G#3, A3, B3, C4, D4, followed by a whole rest, and then E4, F#4, G#4, A4, B4, C5, D5.

LA maggiore

Musical notation for LA maggiore in bass clef. The key signature is A major (three sharps). The melody consists of a sequence of eighth notes: A2, B2, C#2, D#2, E2, F#2, G#2, A2, B2, C#2, D#2, E2, F#2, G#2, A2, followed by a whole rest, and then B2, C#2, D#2, E2, F#2, G#2, A2.

MI maggiore

Musical notation for MI maggiore in bass clef. The key signature is E major (four sharps). The melody consists of a sequence of eighth notes: E2, F#2, G#2, A#2, B2, C#2, D#2, E2, F#2, G#2, A#2, B2, C#2, D#2, E2, followed by a whole rest, and then F#2, G#2, A#2, B2, C#2, D#2, E2.

SI maggiore

Musical notation for SI maggiore in bass clef. The key signature is B major (five sharps). The melody consists of a sequence of eighth notes: B2, C#2, D#2, E#2, F#2, G#2, A#2, B2, C#2, D#2, E#2, F#2, G#2, A#2, B2, followed by a whole rest, and then C#2, D#2, E#2, F#2, G#2, A#2, B2.

FA# maggiore

Musical notation for FA# maggiore in bass clef. The key signature is F# major (six sharps). The melody consists of a sequence of eighth notes: F#2, G#2, A#2, B#2, C#2, D#2, E#2, F#2, G#2, A#2, B#2, C#2, D#2, E#2, F#2, followed by a whole rest, and then G#2, A#2, B#2, C#2, D#2, E#2, F#2.

DO# maggiore

Musical notation for DO# maggiore in bass clef. The key signature is D# major (seven sharps). The melody consists of a sequence of eighth notes: D#2, E#2, F#2, G#2, A#2, B#2, C#2, D#2, E#2, F#2, G#2, A#2, B#2, C#2, D#2, followed by a whole rest, and then E#2, F#2, G#2, A#2, B#2, C#2, D#2.

Maestoso

7

f *p* *cresc.* *f* *f*

Espressivo

8

p *cresc.* *f* *f* *p*

ISBN 978-88-99195-16-8

€ 10,00